

Maryland Socioeconomic Demographic Maps

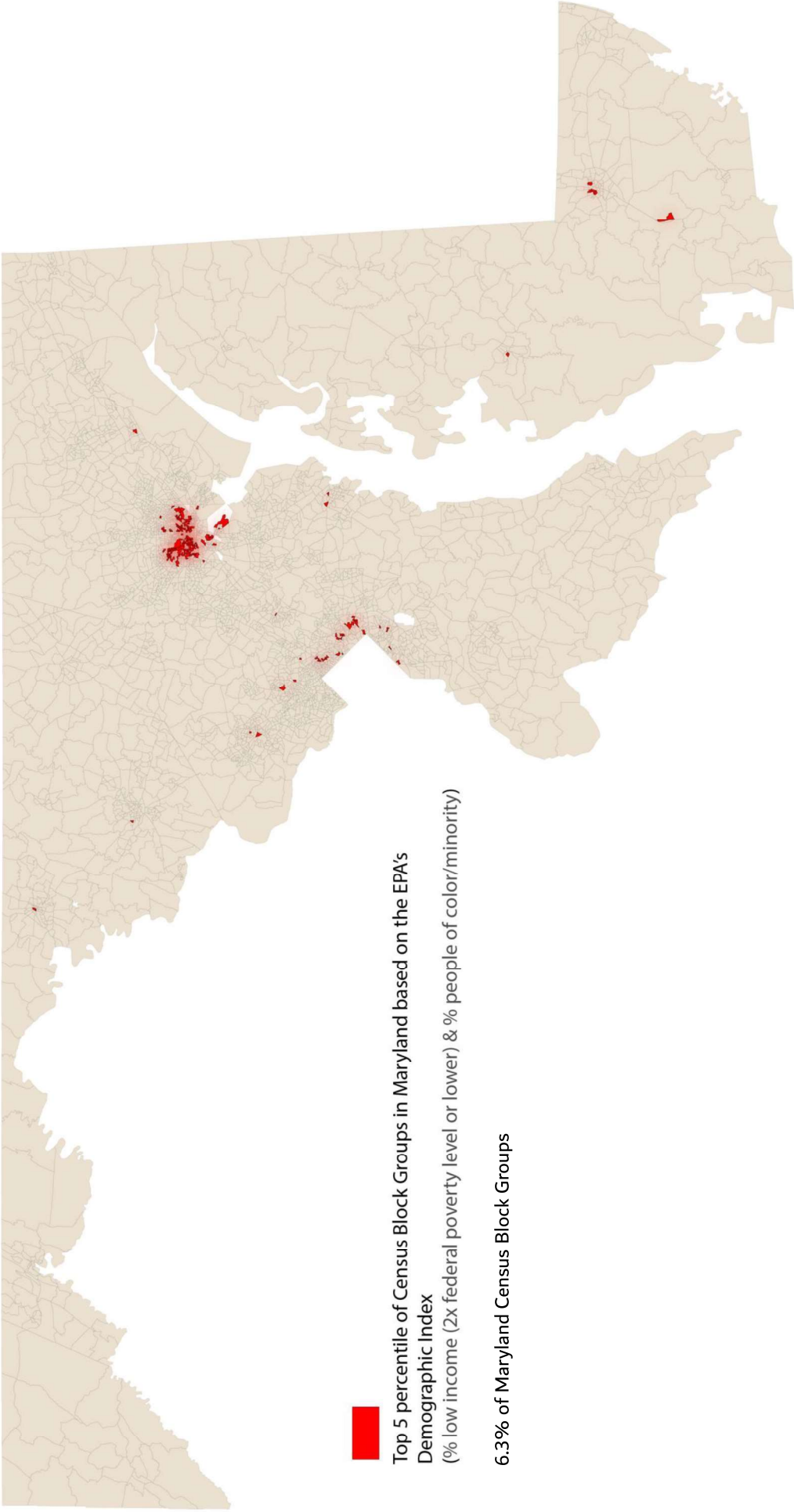
2020 Data

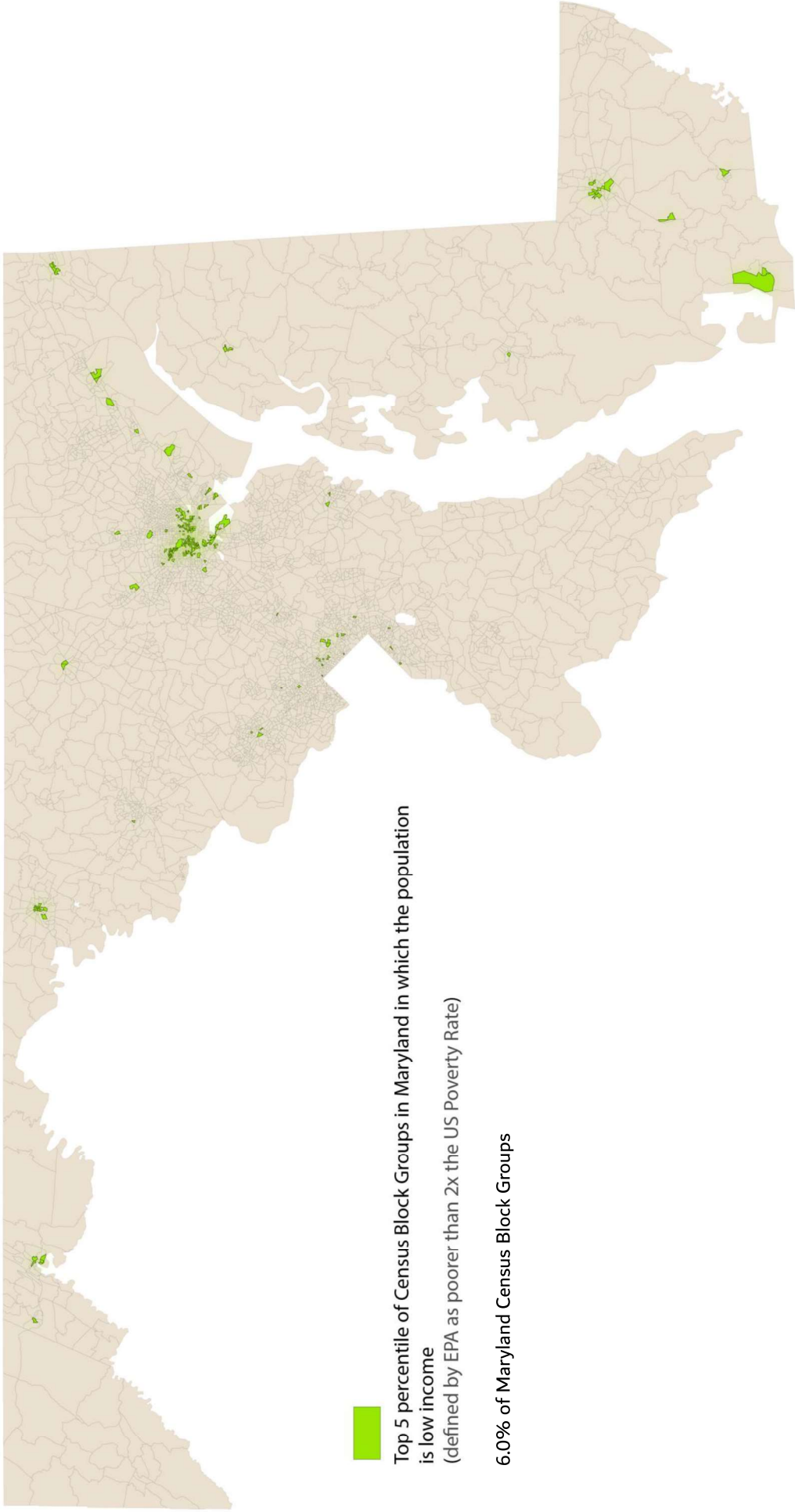
US Census & EPA Environmental Justice Screening Tool

Technical Documentation: https://www.epa.gov/sites/default/files/2021-04/documents/eiscreen_technical_document.pdf

Data Files & Metadata: <https://gaftp.epa.gov/EJSCREEN/2020/>

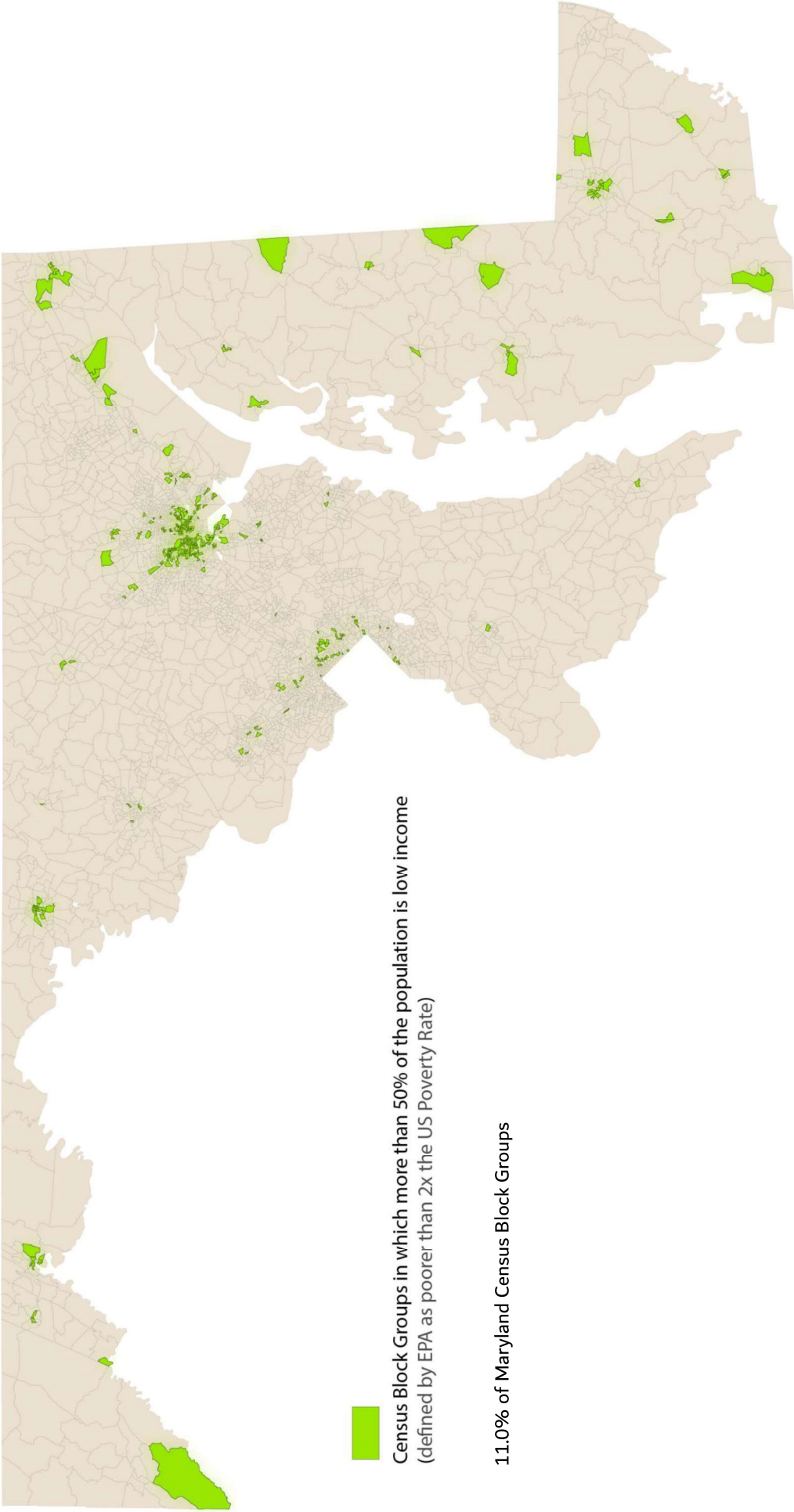
Prepared by Andrew Bernish, MDOT (abernish@mdot.Maryland.gov) | January, 2022





Top 5 percentile of Census Block Groups in Maryland in which the population is low income (defined by EPA as poorer than 2x the US Poverty Rate)

6.0% of Maryland Census Block Groups



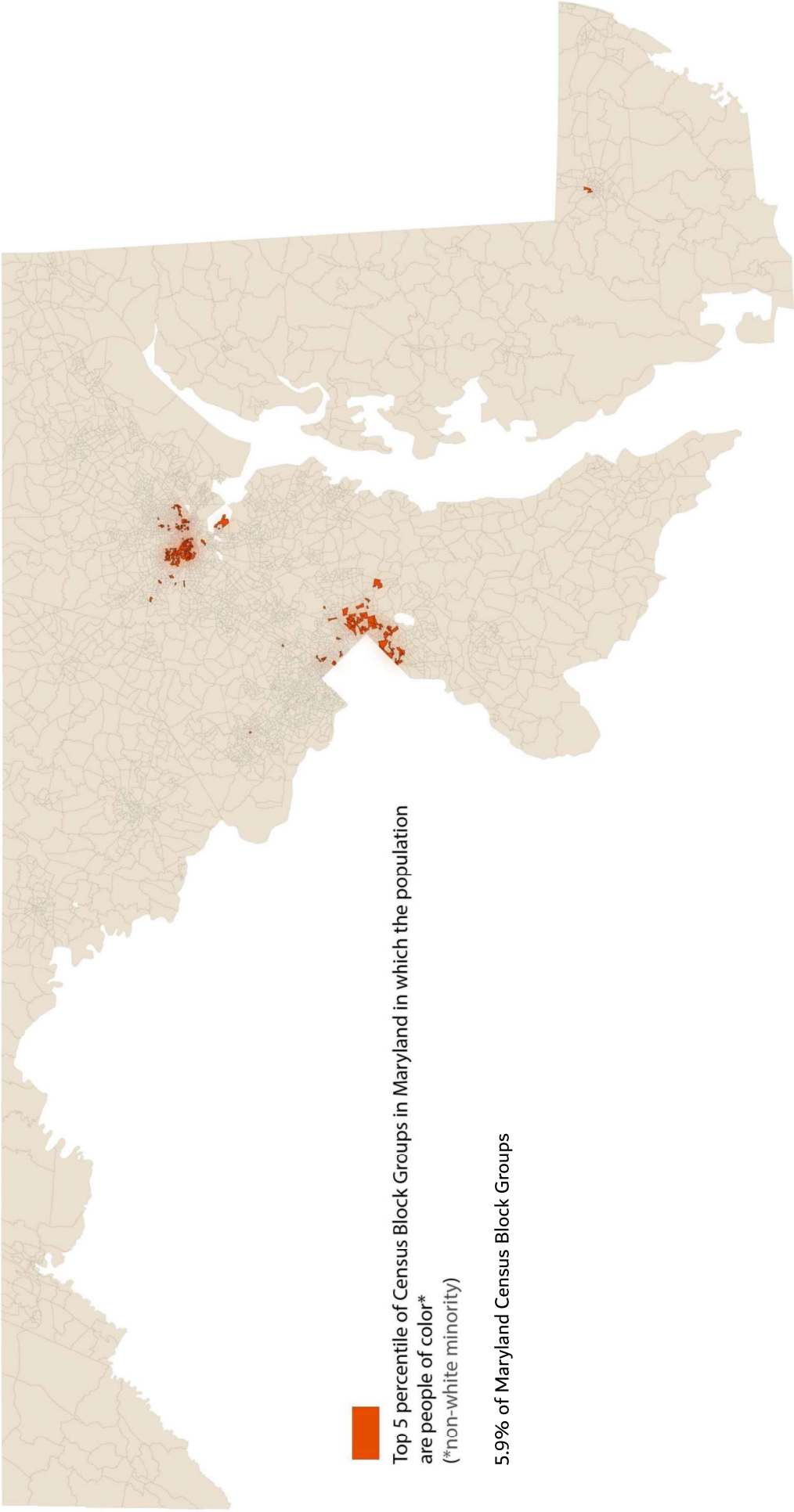
Census Block Groups in which more than 50% of the population is low income
(defined by EPA as poorer than 2x the US Poverty Rate)

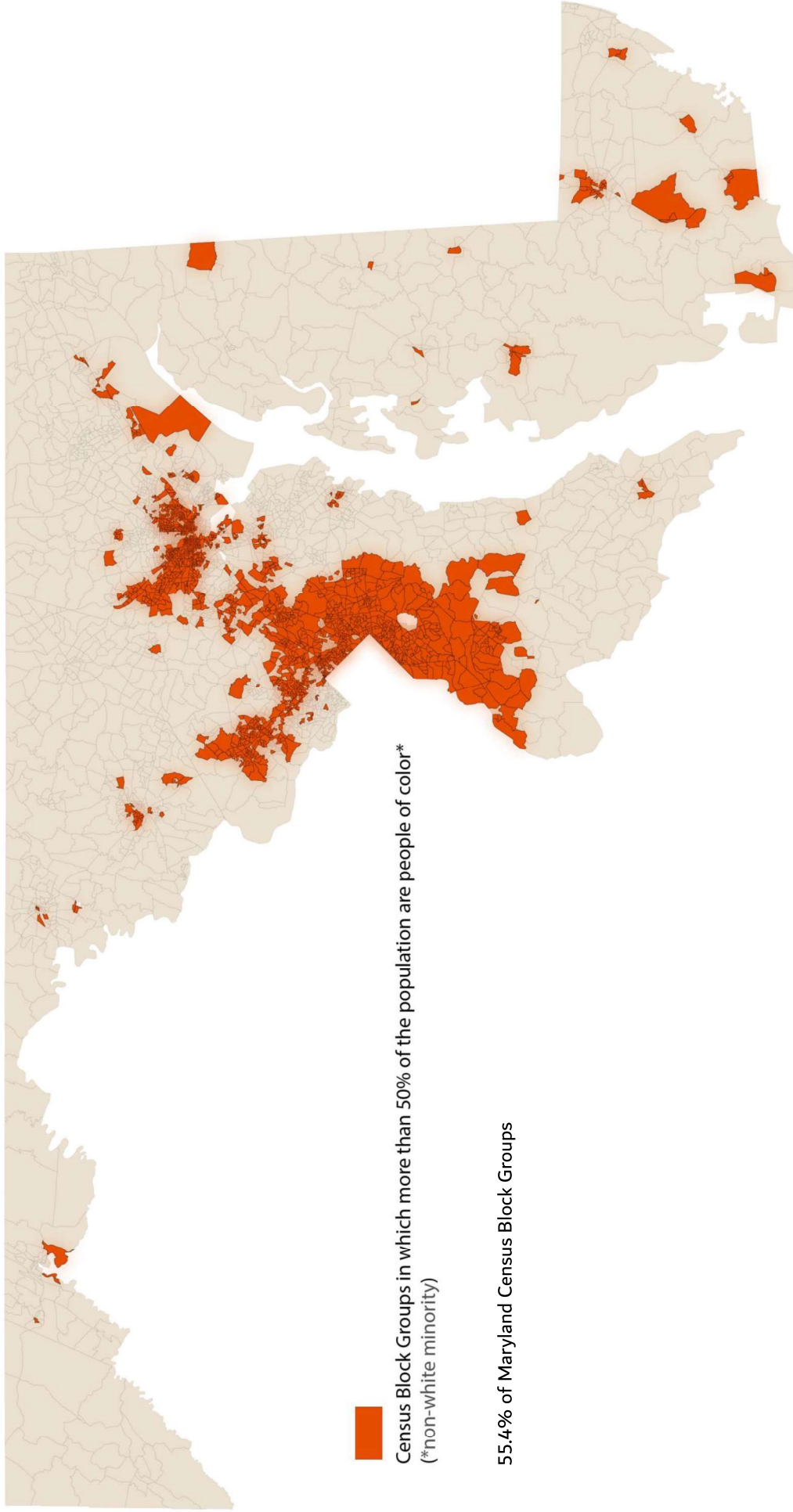
11.0% of Maryland Census Block Groups



Census Block Groups in which more than 75% of the population is low income
(defined by EPA as poorer than 2x the US Poverty Rate)

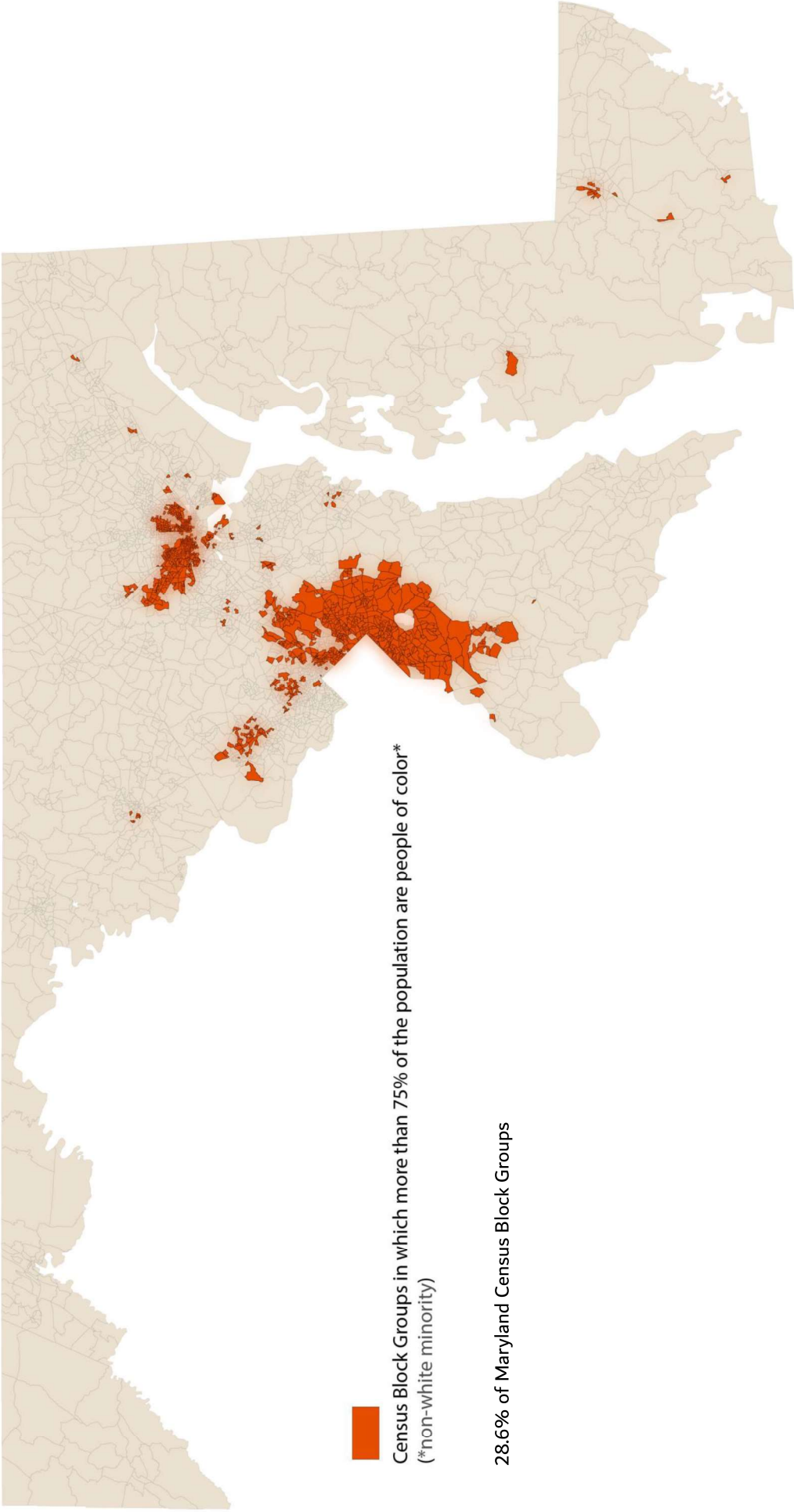
2.2% of Maryland Census Block Groups





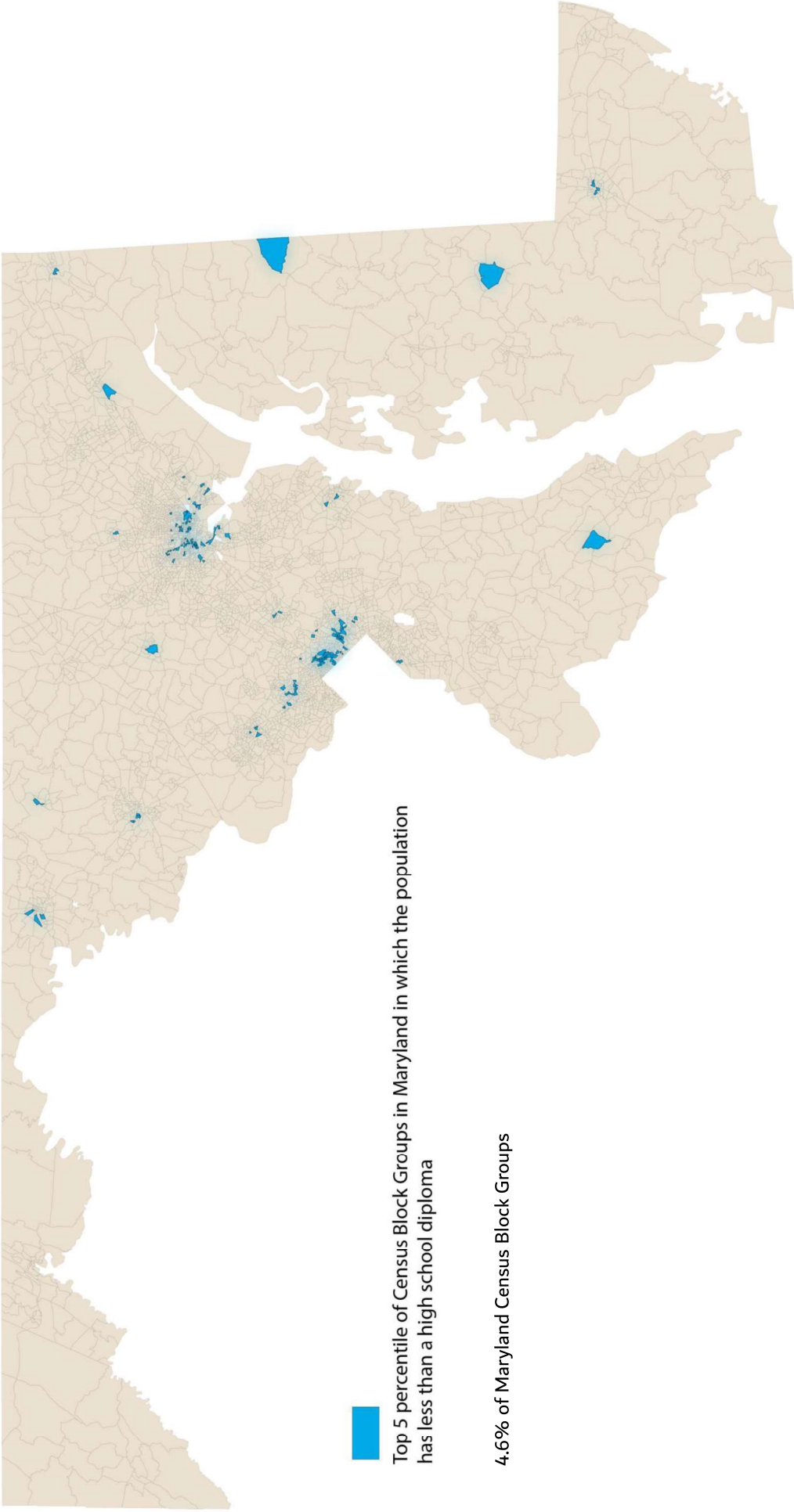
Census Block Groups in which more than 50% of the population are people of color*
(*non-white minority)

55.4% of Maryland Census Block Groups



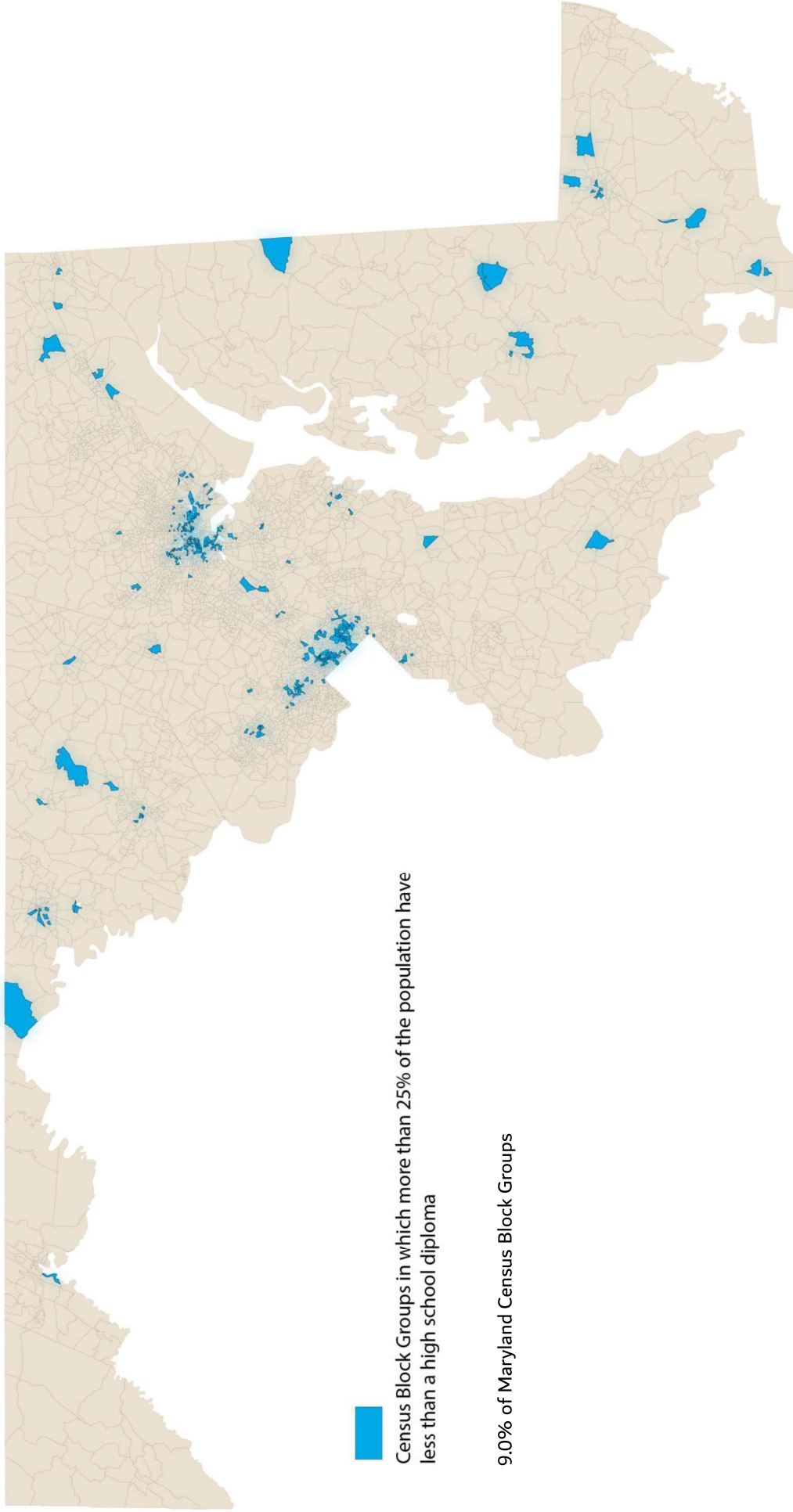
Census Block Groups in which more than 75% of the population are people of color*
(*non-white minority)

28.6% of Maryland Census Block Groups



Top 5 percentile of Census Block Groups in Maryland in which the population has less than a high school diploma

4.6% of Maryland Census Block Groups



Census Block Groups in which more than 25% of the population have less than a high school diploma

9.0% of Maryland Census Block Groups



Census Block Groups in which more than 50% of the population have less than a high school diploma

0.6% of Maryland Census Block Groups